



Liquitex[®]

Liquitex – the first acrylic colour for artists

Liquitex is the first acrylic colour in history made for artists. Since it was launched 1955, Liquitex Acrylic Colour has been constantly developed and improved. Today it is the most widely used acrylic colour. Liquitex offers a wide choice of colours and also many interesting mediums and additives for acrylics. The professional products include artists' colours in Soft, Heavy and Super heavy Body and Ink. Liquitex Basic is our range with studio colours in acrylics.

For more information, see www.liquitex.com.





Acrylic colour



Liquitex HB - Heavy Body

Liquitex HB - Heavy Body

The Heavy Body Artist Color has a creamy consistency perfect for traditional art techniques using brushes or knives, as well as for experimental, mixed media, collage and printmaking applications. Impasto applications retain crisp brush strokes and knife marks. The paint has excellent handling and blending properties with increased open-working time. High pigment load produces rich, brilliant, permanent colour.

- Retains brush strokes and knife marks
- Remarkably low shrinkage
- High pigment load
- Strikingly clear and pure colour
- Flexible even when it's dry – thick films remain free of cracks and chips
- Very supple consistency, liked creamy butter
- Little or no wet-to-dry value shift
- Double coverage compared to Super Heavy Body



59ml Tube

Colour	Moq	Ref No	Barcode
Pack of HB 59 ml, 3/colour	1	1101	
108 Orange brulee quinacr.	3*	571381	0094376921335
109 Quinacridone red-orange	3*	571373	0094376921342
110 Quinacridone crimson	3*	571374	0094376921359
112 Quinacridone red	3*	571313	0094376921366
114 Quinacridone magenta	3*	571318	0094376921373
115 Deep violet	3*	551457	0094376921380
116 Alizarin perm.crimson hue	3*	551451	0094376921397
118 Quinacridone blue violet	3*	571375	0094376921410
127 Burnt sienna	3*	571353	0094376921427
128 Burnt umber	3*	571354	0094376921434
129 Transparent burnt sienna	3*	592000	0094376943382
130 Transparent burnt umber	3*	592001	0094376943399
150 Cadmium orange	3*	571307	0094376921441
151 Cadmium red med. hue	3*	551452	0094376921458
152 Cadmium red light	3*	571312	0094376921465
154 Cadmium red medium	3*	571315	0094376921472
159 Cadmium yellow light hue	3*	571371	0094376921489
160 Cadmium yellow light	3*	571301	0094376921496
161 Cadmium yellow medium	3*	571303	0094376921502
163 Cad. yellow deep hue	3*	571372	0094376921519
164 Cerulean blue	3*	571333	0094376921526
166 Chromium oxide green	3*	571346	0094376921533
169 Cobalt turquoise	3*	571378	0094376921540
170 Cobalt blue	3*	571329	0094376921557
171 Cobalt green	3*	551456	0094376929713
172 Cobalt teal	3*	571379	0094376921571
186 Purple	3*	571326	0094376921588
224 Hooker's green hue	3*	571347	0094376921595
225 Hooker's green deep hue	3*	551458	0094376921601
229 Iridescent rich bronze	3*	592002	0094376921625
230 Iridescent rich copper	3*	592003	0094376921632
234 Bright gold	3*	571365	0094376921670
235 Rich gold	3*	571383	0094376921687
236 Bright silver	3*	571366	0094376921694
237 Iridescent antique gold	3*	592004	0094376921700
238 Iridescent white	3*	571369	0094376921717
239 Iridescent rich silver	3*	592005	0094376921724
244 Ivory black	3*	571357	0094376921755
275 Manganese blue hue	3*	571377	0094376921762
276 Mars black	3*	571356	0094376921779
292 Naphtol crimson	3*	571316	0094376921786
294 Naphtol red light	3*	571314	0094376921793
300 Deep magenta	3*	571319	0094376921809
310 Payne's gray	3*	571355	0094376921816
311 Cadmium red deep hue	3*	571317	0094376921823
312 Light green	3*	571341	0094376921830
314 Phthalo. Blue (red shade)	3*	592006	0094376943405
315 Sap green	3*	551462	0094376921847
316 Phthalocyanine blue	3*	571331	0094376921854

Colour	Moq	Ref No	Barcode
317 Phthalocyanine green	3*	571338	0094376921861
319 Phthalo green (yell.shade)	3*	571380	0094376921885
320 Prussian blue hue	3*	551463	0094376921878
321 Pyrrole red	3*	592007	0094376943412
322 Indanthrene blue	3*	592008	0094376943429
323 Pyrrole orange	3*	592009	0094376943436
324 Indian yellow	3*	592010	0094376943443
325 Green gold	3*	592011	0094376943450
326 Pyrrole crimson	3*	592012	0094376943467
327 Transparent viridian hue	3*	592013	0094376943474
330 Raw sienna	3*	571350	0094376921892
331 Raw umber	3*	571351	0094376921908
332 Transparent raw sienna	3*	592014	0094376943481
333 Transparent raw umber	3*	592015	0094376943498
335 Red oxide	3*	571352	0094376921915
350 Green deep permanent	3*	571339	0094376921922
380 Ultra. blue (green shade)	3*	571328	0094376921939
381 Cobalt blue hue	3*	571327	0094376921946
382 Ultra. blue (red shade)	3*	571376	0094376921953
391 Prism violet	3*	571325	0094376921960
392 Van dyck red hue	3*	551466	0094376921977
398 Viridian hue	3*	551467	0094376921984
411 Yellow light hansa	3*	571300	0094376921991
412 Yellow medium azo	3*	571302	0094376922004
414 Yellow orange azo	3*	571306	0094376922011
416 Yellow oxide	3*	571348	0094376922028
430 Transparent mixing white	3*	571382	0094376922035
432 Titanium white	3*	571358	0094376922042
434 Unbleached titanium	3*	551465	0094376922059
436 Parchment	3*	551461	0094376922066
450 Emerald green	3*	571340	0094376922073
470 Cerulean blue hue	3*	571332	0094376922080
500 Medium magenta	3*	571320	0094376922097
510 Cadmium red light hue	3*	571311	0094376922103
530 Bronze yellow	3*	571349	0094376922110
561 Turquoise deep	3*	551464	0094376922134
570 Brilliant blue	3*	571334	0094376922141
590 Brilliant purple	3*	571324	0094376922158
599 Neutral grey no 5	3*	571361	0094376922165
601 Naples yellow hue	3*	551460	0094376922172
620 Vivid red orange	3*	571310	0094376922189
650 Light emerald green	3*	571342	0094376922196
660 Bright aqua green	3*	571337	0094376922202
680 Light blue violet	3*	571330	0094376922219
720 Cadmium orange hue	3*	571308	0094376922226
730 Turner's yellow	3*	571305	0094376922233
740 Vivid lime green	3*	571343	0094376922240
770 Light blue permanent	3*	571335	0094376922257
810 Light portrait pink	3*	571322	0094376922264



138ml Tube

Colour	Moq	Ref No	Barcode
Pack of HB 138 ml, 1pc/colour	1	1104	
114 Quinacridone magenta	1	571456	0094376921564
116 Alizarin perm crimson hue	1	571455	0094376922585
127 Burnt sienna	1	571468	0094376922592
128 Burnt umber	1	571469	0094376922608
129 Transparent burnt sienna	1	592020	0094376943504
130 Transparent burnt umber	1	592021	0094376943511
152 Cadmium red light	1	571452	0094376922615
154 Cadmium red medium	1	571453	0094376922622
160 Cadmium yellow light	1	571450	0094376922639
161 Cadmium yellow medium	1	571451	0094376922646
164 Cerulean blue	1	571461	0094376922653
170 Cobalt blue	1	571459	0094376922660
186 Purple	1	571457	0094376922677
224 Hooker's green hue	1	571464	0094376922684
244 Ivory black	1	571471	0094376922691
276 Mars black	1	571470	0094376922707
292 Naphtol crimson	1	571454	0094376922714
312 Light green	1	571463	0094376922721

Colour	Moq	Ref No	Barcode
314 Phthalocyan. blue (red sh)	1	592022	0094376943528
316 Phthalocyanine blue	1	571460	0094376922738
317 Phthalocyanine green	1	571462	0094376922745
321 Pyrrole red	1	592023	0094376943535
322 Indanthrene blue	1	592024	0094376943542
323 Pyrrole orange	1	592025	0094376943559
324 Indian yellow	1	592026	0094376943566
325 Green gold	1	592027	0094376943573
326 Pyrrole crimson	1	592028	0094376943580
327 Transparent viridian hue	1	592029	0094376943597
330 Raw sienna	1	571466	0094376922752
331 Raw umber	1	571467	0094376922769
332 Transparent raw sienna	1	592030	0094376943603
333 Transparent raw umber	1	592031	0094376943610
380 Ultra. blue (green shade)	1	571458	0094376922776
416 Yellow oxide	1	571465	0094376922783
432 Titanium white	1	571473	0094376922790
434 Unbleached titanium	1	571472	0094376922806



207ml Tube

Colour	Moq	Ref No	Barcode
276 Mars black	1	592036	0094376922844
432 Titanium white	1	571900	0094376922851



473ml Pot

Colour	Moq	Ref No	Barcode
244 Ivory black	1	571601	0094376923001
276 Mars black	1	592040	0094376923018
432 Titanium white	1	571602	0094376923025



946ml Pot

Colour	Moq	Ref No	Barcode
Pack of HB 946 ml, 1pc/colour	1	1105	
160 Cadmium yellow light	1	571703	0
161 Cadmium yellow medium	1	571704	0094376946246
720 Cadmium orange	1	571705	0094376946185
152 Cadmium red light	1	571706	0094376946178
294 Naphthol red light	1	571707	0094376946147
154 Cadmium red medium	1	571708	0094376946161
151 Cadmium red med. hue	1	571709	0094376946154
116 Alizarin perm.crimson hue	1	571710	0094376946130
186 Purple	1	571711	0094376946338
170 Cobalt blue	1	571712	0094376946307
380 Ultra. blue (green shade)	1	571713	0094376946314
316 Phthalo. blue (red shade)	1	571714	0094376946321
164 Cerulean blue	1	571715	0094376946291

Colour	Moq	Ref No	Barcode
317 Phthalo. green (blue sh.)	1	571716	0094376946284
312 Light green permanent	1	571717	0094376946260
166 Chromium oxide green	1	571718	0094376946277
416 Yellow oxide	1	571719	0094376946239
330 Raw sienna	1	571720	0094376946222
331 Raw umber	1	571721	0094376946215
127 Burnt sienna	1	571722	0094376946192
128 Burnt umber	1	571723	0094376946208
430 Transparent mixing white	1	571724	0094376946345
434 Unbleached titanium	1	571725	0094376946352
276 Mars black	1	592041	0094376923049
244 Ivory black	1	571701	0094376923032
432 Titanium white	1	571702	0094376923056

Boxes and Sets

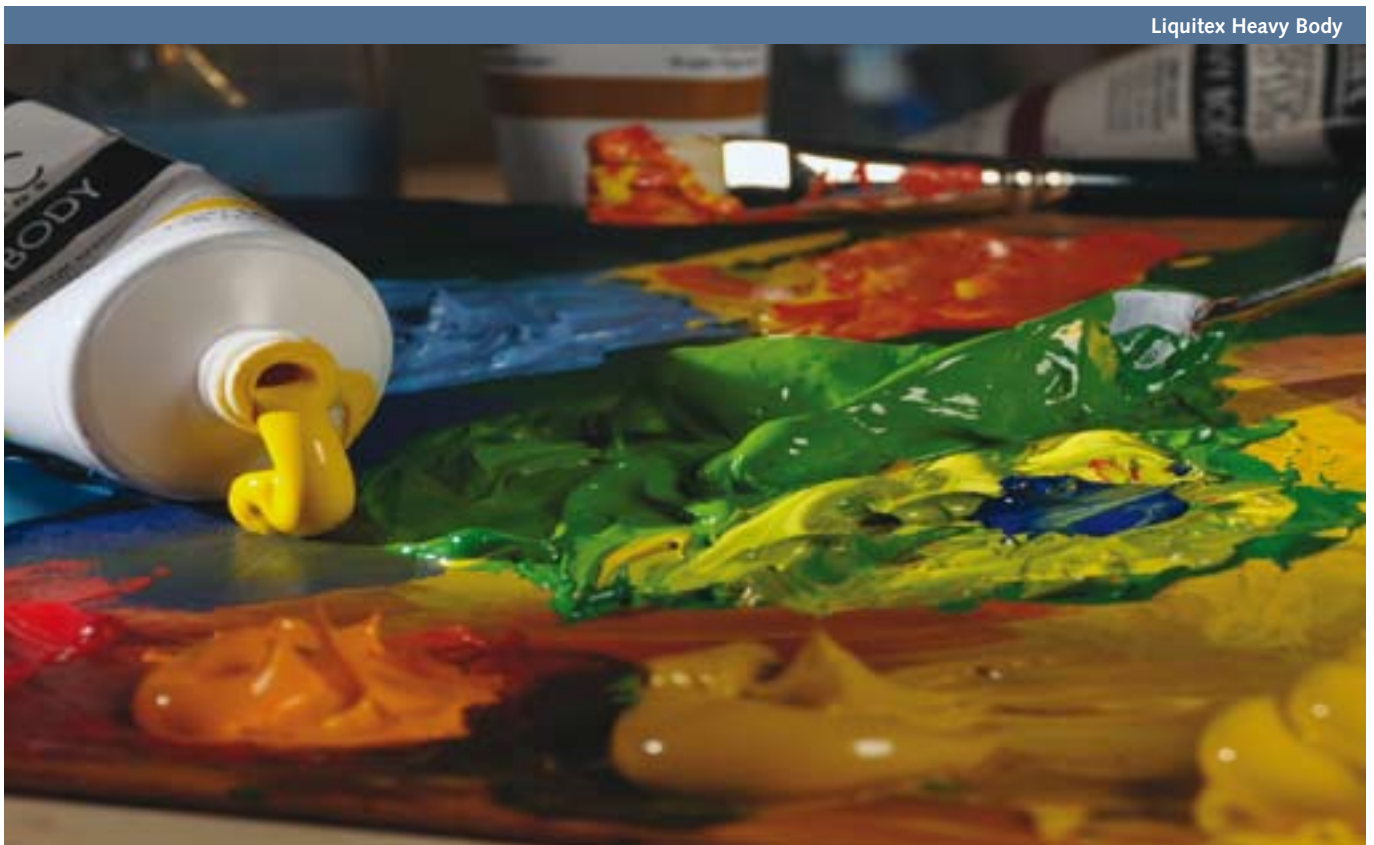


HB Classic Beginner Set 6x22 ml

Primary colours set with 6 tubes 22ml Liquitex Heavy Body.

Product	Moq	Ref No	Barcode
Classic beginner set 6x22 ml	6	592281	0094376922813

Liquitex HB - Heavy Body



Liquitex Heavy Body

Liquitex Heavy Body Colour Chart





Liquitex Basics

Liquitex Basics studio acrylic colour is permanent, waterproof and flexible when dry. The Basic range concludes the same binder as Heavy Body and Soft Body Artist Colour, but in Basics the pigment load is less. The paint is thick and brushstrokes will remain visible when the paint is dry. The colours provide excellent coverage and will dry to a satin sheen surface. The 36 colours in the range are intended to cover the basic need. Tube sizes are 118ml except for Ivory Black and Titanium White that is also available in 946ml pots. The colours can be mixed with all Liquitex Mediums and Additives.





118ml Tube

Colour	Moq	Ref No	Barcode
Pack of Basic 118ml, 3/colour	1	1102	
114 Acra magenta (acra violet)	3*	551501	0094376922295
115 Deep violet	3*	551496	0094376922301
116 Alizarin crimson	3*	551525	0094376922318
127 Burnt sienna	3*	551507	0094376922325
128 Burnt umber	3*	551508	0094376922332
151 Cadmium red med. hue	3*	551503	0094376922349
160 Cadmium yellow light hue	3*	551512	0094376922356
161 Cadmium yellow med.hue	3*	551511	0094376922363
163 Cadm. yellow deep hue	3*	551494	0094376932942
170 Cobalt blue hue	3*	551518	0094376922370
186 Dioxanine purple	3*	551519	0094376922387
224 Hookers green permanent	3*	551497	0094376933093
229 Bronze	3*	551490	0094376974676
230 Copper	3*	551491	0094376974669
234 Gold	3*	551527	0094376922394
236 Silver	3*	551528	0094376922400
244 Ivory black	3*	551522	0094376930719
276 Mars black	3*	551499	0094376922417
292 Naphtol crimson	3*	551495	0094376932959
311 Cadmium red deep hue	3*	551502	0094376922424
312 Green light	3*	551513	0094376922431
316 Phthalocyanine blue	3*	551517	0094376922448
317 Phthalocyanine green	3*	551515	0094376922455
330 Raw sienna	3*	551509	0094376922462

Colour	Moq	Ref No	Barcode
331 Raw umber	3*	551498	0094376933109
335 Red oxide	3*	551506	0094376922479
350 Green deep	3*	551526	0094376922486
380 Ultramarine blue	3*	551520	0094376922493
391 Prismatic violet	3*	551492	0094376974645
410 Primary yellow	3*	551529	0094376931228
415 Primary red	3*	551530	0094376931235
416 Yellow oxide	3*	551510	0094376922509
420 Primary blue	3*	551531	0094376931242
432 Titanium white	3*	551523	0094376922516
434 Unbleached titanium	3*	551493	0094376974652
470 Cerulean blue hue	3*	551516	0094376922523
500 Medium magenta	3*	551532	0094376974577
510 Cadmium red light hue	3*	551504	0094376922530
530 Bronze yellow	3*	551533	0094376974591
590 Brilliant purple	3*	551534	0094376974638
599 Neutral gray no 5	3*	551521	0094376922547
601 Naples yellow	3*	551535	0094376974584
660 Bright aqua green	3*	551514	0094376922554
680 Light blue violet	3*	551536	0094376974621
720 Cadmium orange hue	3*	551505	0094376922561
770 Light blue permanent	3*	551537	0094376974614
810 Light portrait pink	3*	551538	0094376974560
840 Brilliant yellow green	3*	551539	0094376974607

946ml Pot

Colour	Moq	Ref No	Barcode
116 Alizarin crimson	1	551566	0094376942293
128 Burnt umber	1	551567	0094376942323
151 Cadmium red med. hue	1	551568	0094376942392
161 Cadmium yellow med.hue	1	551569	0094376942309
244 Ivory black	1	551565	0943769230740
312 Green light	1	551570	0094376942378
316 Phthalocyanine blue	1	551571	0094376942347
317 Phthalocyanine green	1	551572	0094376942385
330 Raw sienna	1	551573	0094376942330
380 Ultramarine blue	1	551574	0094376942316
410 Primary yellow	1	551575	0094376942415
415 Primary red	1	551576	0094376942422
416 Yellow oxide	1	551577	0094376942361
420 Primary blue	1	551578	0094376942408
432 Titanium white	1	551564	0094376922998
470 Cerulean blue hue	1	551579	0094376942354



Boxes and sets



Basics set 5x118 ml

Set with Basics Acrylic Colour in 118 ml tubes, with black and white and the primary colours: yellow, red and blue.

Product	Moq	Ref No	Barcode
Basics set 5x118 ml	1	571476	0094376931426



Basics set 24x22 ml

Set with 24 colours of Basics Acrylic Colour in 22ml tubes.

Product	Moq	Ref No	Barcode
Basics set 24x22 ml	6	594564	0094376945645

Liquitex Basics



Basics set 6x22 ml

An affordable set with 6x22ml tubes of Basics Acrylic Colour (yellow, red, blue, black and white).

Product	Moq	Ref No	Barcode
Basics set 6x22 ml	12	592287	0094376922875



Basics set 12x22 ml

Set with 12 colours of Basics Acrylic Colour in 22ml tubes.

Product	Moq	Ref No	Barcode
Basics set 12x22 ml	6	594563	0094376945638

Liquitex Basics' Mediums

Four mediums for those who want to create different effects with their colours, to a more affordable price than with the mediums of artists 'quality.

Ideal for students and beginners who are eager to try painting with mediums. Liquitex mediums, available in 200ml tubes, are permanent and non-yellowing..



Light Modeling Paste

A lightweight, airy but also thick and flexible gel, good for sculptural applications.

Gloss Heavy Gel Medium

Very thick, retains brushstrokes, dries transparent and glossy.

Gloss Gel Medium

A thick, glossy and transparent painting medium. Excellent for glazes or creating textures. Will add more body to the paint.

Matte Gel Medium

A thick medium, transparent and matte when dry. Retains brushstrokes.



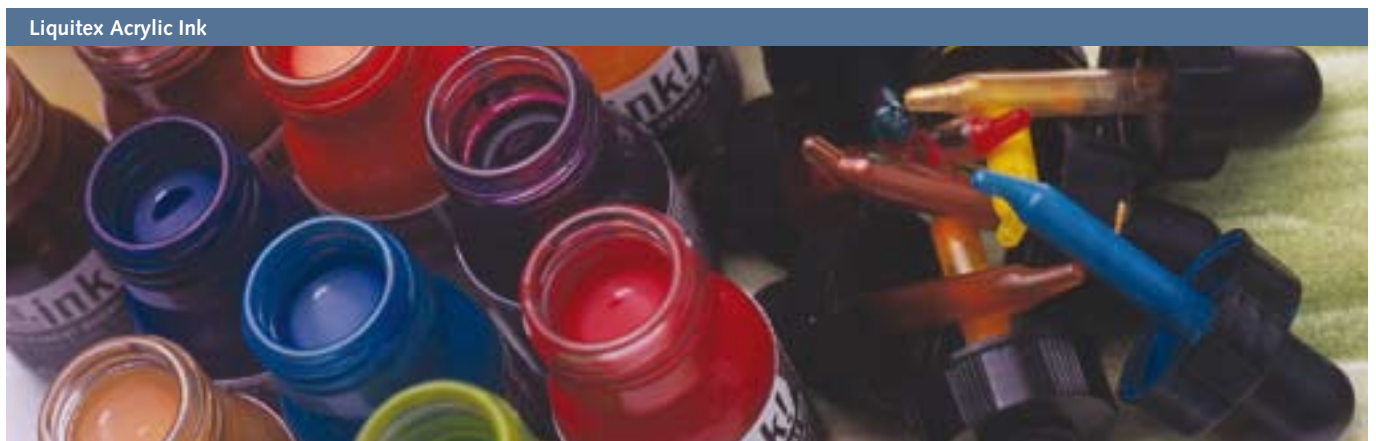
Product	Moq	Ref No	Barcode
Light modeling paste 200 ml	1	594221	0094376942217
Gloss heavy gel med. 200 ml	1	594222	0094376942224
Gloss gel medium 200 ml	1	594223	0094376942231
Matte gel medium 200 ml	1	594224	0094376942248



Liquitex Acrylic Ink

Liquitex Professional Acrylic Ink! is a range of extremely fluid acrylics, with very intense colour pigments. They dry quickly, are permanent, water resistant and non-clogging, which makes them suitable for a variety of techniques and supports. Ideal for watercolour effects and similar techniques. Can be mixed with all Liquitex colours and mediums. Liquitex inks are available in 30 colours in handy 30ml drop bottles.

- Intense bold lightfast colours
- Extremely fluid, no need to dilute for airbrushing or calligraphy
- Superior water resistance
- Non-clogging
- Fast drying
- Ideal for watercolour effects





Bottle 30ml

Colour	Moq	Ref No	Barcode
Pack of Ink 30 ml+pen cleaner	1	1109	
114 Quinacridone magenta	3*	571250	0094376975772
115 Deep violet	3*	571251	0094376975789
129 Transparent burnt sienna	3*	571252	0094376975796
130 Transparent burnt umber	3*	571253	0094376975802
159 Cadmium yellow light hue	3*	571254	0094376975819
186 Dioxazine purple	3*	571255	0094376975826
229 Iridescent rich bronze	3*	571256	0094376975833
230 Iridescent rich copper	3*	571257	0094376975840
234 Iridescent bright gold	3*	571258	0094376975857
236 Iridescent burnt silver	3*	571259	0094376975864
292 Naphthol crimson	3*	571260	0094376975871
315 Sap green permanent	3*	571261	0094376975888
316 Phthalocyanine blue (gs)	3*	571262	0094376975895
317 Phthalocyanine green (bs)	3*	571263	0094376975901

Colour	Moq	Ref No	Barcode
319 Phthalocyanine green (ys)	3*	571264	0094376975918
320 Prussian blue hue	3*	571265	0094376975925
321 Pyrrole red	3*	571266	0094376975932
332 Transparent raw sienna	3*	571267	0094376975949
333 Transparent raw umber	3*	571268	0094376975956
335 Red oxide	3*	571269	0094376975963
337 Carbon black	3*	571270	0094376976069
412 Yellow medium azo	3*	571271	0094376975970
414 Yellow orange azo	3*	571272	0094376975987
416 Yellow oxide	3*	571273	0094376975994
432 Titanium white	3*	571274	0094376976007
470 Cerulean blue hue	3*	571275	0094376976014
561 Turquoise deep	3*	571276	0094376976021
599 Neutral grey 5	3*	571277	0094376976038
620 Vivid red orange	3*	571278	0094376976045



Bottle 150ml

Colour	Moq	Ref No	Barcode
337 Carbon black	2*	571281	0094376976519

Liquitex Acrylic Ink, more



Ink Pen Cleaner

Ideal for cleaning Liquitex Ink from brushes, pens and airbrush parts. If the ink is already dry, soak the items in Liquitex Professional Ink! Cleaner for a few minutes and then rinse with water.

Product	Moq	Ref No	Barcode
Liquitex ink pen cleaner 150ml	2*	571280	0094376975765

TIPS AND TECHNIQUES

The colours in Liquitex Professional Acrylic Inks! are extremely versatile and can be used in many contexts. Use them alone or together with other Liquitex colours or mediums.

- | | |
|-----------------|-----------------------|
| With brush | Watercolour technique |
| On fabric | Stencils |
| Pouring | Stippling |
| Airbrush | Sketch |
| Calligraphy | Photo Tinting |
| Dry brush | Collage |
| Illustration | Scrapbooking |
| Screen Printing | With Roller |
| Stamping | Decoupage/Glue |





Liquitex Surface Preparations

You prepare – prime – a surface to make it more suitable for the paint, adding tooth and providing better adhesion. Liquitex Gessos can be used on canvas, paper, wood and metal and are suitable for both acrylics and oils.



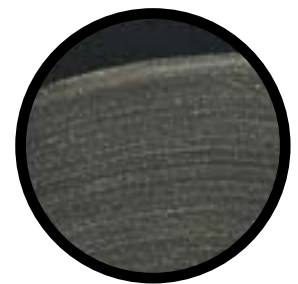
Gesso

The classic primer for absorbent surfaces such as canvas, paper and wood. Will function like a sort of “glue” that prevents the paint from “slipping off”. Suitable for both oil and acrylics. One coat is usually enough for acrylics, while two coats are recommended for oils. The traditional gesso is white and covering.

Product	Moq	Ref No	Barcode
Gesso 237 ml	1	571929	0094376923940
Gesso 946 ml	1	571370	0094376924046
Gesso 1.89 liter	1	571931	0094376924053

Clear Gesso

Leaves the underlying surface visible. Excellent if you want to sketch directly on the support and keep the drawing clean and visible. This gesso is ideal for soft pastels, oil pastels and charcoal. If you want a slightly tinted ground you can mix the gesso with a small amount of acrylic paint. One coat is usually enough. A thin coat will be transparent; a thicker one can be translucent (semi transparent).



Product	Moq	Ref No	Barcode
Clear gesso 237 ml	1	593166	0094376931662

Super Heavy Gesso

A super thick, titanium white gesso that really gives fantasy something to play with. Provides all the attributes of traditional gesso. Ideal for thick and sculptural applications with knife or brush.



Product	Moq	Ref No	Barcode
Super Heavy Gesso 237 ml	1	571953	0094376931754
Super Heavy Gesso 946 ml	1	571954	0094376945737

Liquitex Fluid Mediums

Already the name reveals that those mediums are fluid. They reduce viscosity of heavier paints, tend to self-level and do not retain brushstrokes. Acrylic resin in the formulation will preserve adhesion and provide a long lasting result.



Palette Wetting Spray

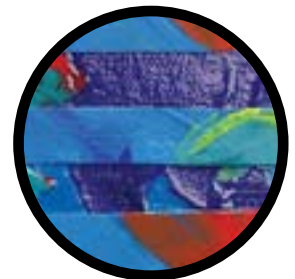
A smart, liquid acrylic resin that will slow the drying process. Spray on palette or directly on the half-finished painting. This medium makes the colours blend easier. It can be used for thinning the paint and will at the same time bind the pigments. Use repeatedly during the drying process to prevent the paint from developing a skin.



Product	Moq	Ref No	Barcode
Palette wetting spray 237 ml	1	571960	0094376945782

Gloss Medium & Varnish

One of Liquitex 'mainstay. A medium for everything with two important functions. It can be used as a varnish or/ and as a fluid, glossy medium. Will improve adhesion of paint film and increase gloss, intensity, colour depths and transparency. When used as a varnish it is non-removable and will establish an even gloss sheen.



Product	Moq	Ref No	Barcode
Gloss M&V 118 ml	1	571904	0094376923780
Gloss M&V 237 ml	1	571942	0094376923797
Gloss M&V 473 ml	1	571917	0094376923803
Gloss M&V 946 ml	1	571943	0094376923810

Glazing Medium

The natural choice for artists who wants to paint in layers. Gives maximum transparency, depths and intensity to the painting. Excellent self-leveling properties; will not retain brushstrokes. Mix with Slow-Dri Blending Medium or Slow Dri Fluid Retarder when you want to increase the drying time.



Product	Moq	Ref No	Barcode
Glazing medium 118 ml	1	593158	0094376931587

Matte Medium

A classic medium for fine brushwork and details. Also excellent as a glue for collages. This medium has a buttery consistency and is perfect together with opaque colours. When you want a satin sheen, just mix it with Gloss Medium & Varnish.

Product	Moq	Ref No	Barcode
Matt medium 118 ml	1	571939	0094376923834
Matt medium 237 ml	1	571905	0094376923841
Matt medium 473 ml	1	571918	0094376923858



Ultra Matte Medium

A liquid with a high amount of resin. Ultra Matte Medium preserves the matte appearance and will extend paints to double amount with the intensity intact. Perfect for bigger areas where transparency is not required. Dries to a totally matte finish without any gloss at all.

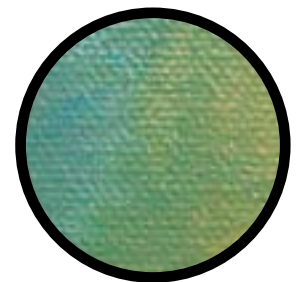
Product	Moq	Ref No	Barcode
Ultra matte medium 237 ml	1	550479	0094376924152



Slow-Dri® Blending Medium

An important medium for creating soft outlines and rounded corners. This medium extends the opening time up to 40% and gives you time for blending and thinking before you go on with the next step. Unlike other mediums, any quantity may be added to the colour without jeopardizing the strength of the paint film (the binder is very strong and will keep the molecules in place).

Product	Moq	Ref No	Barcode
Slow-dri blend medium 118ml	1	571962	0094376931457



Liquitex Gel Mediums

Gel mediums are used for creating three-dimensional surface structures and extending the volume of the paint. They can prolong the drying time and add transparency and gloss. They are milky white when wet and transparent when dry (when not mentioned otherwise). Gel mediums mixed with paint will make the paint appear lighter when still wet. They are perfect for gluing things on to the surface in collage.



Gloss Gel Medium

Keeps the brushstrokes in place. Prolongs the drying time and adds more body to the paint. Mix with transparent colours to get brilliant, thick glazes. With Gloss Gel Medium you can also transfer printed pictures.

Product	Moq	Ref No	Barcode
Gloss gel medium 237 ml	1	571903	0094376924183
Gloss gel medium 946 ml	1	571909	0094376924206
Gloss gel medium 3.78 liter	1	571910	0094376924213

Gloss Heavy Gel Medium

A very thick gel medium that extends working time and increases brilliance and transparency. Mix with acrylic paint and obtain oil colour effects.

Will retain brushstrokes and knife marks.



Product	Moq	Ref No	Barcode
Gloss heavy gel 237 ml	1	571915	0094376923865
Gloss heavy gel 473 ml	1	571925	0094376929782

Gloss Super Heavy Gel Medium

A super heavy gel medium with a buttery consistency. This medium makes it possible to sculpture peaks and valleys without them sinking together when drying. It has a longer drying time than most other gel mediums.



Product	Moq	Ref No	Barcode
Gloss super heavy gel 237 ml	1	593153	0094376931532

Matte Gel Medium

A thick medium that slows drying, maintains heavy body and dries to a translucent matte sheen. Combine with Gloss Gel to create a satin finish. An excellent adhesive for collage with somewhat heavier items.

Product	Moq	Ref No	Barcode
Matt gel medium 237 ml	1	550478	0094376924039



Matte Super Heavy Gel Medium

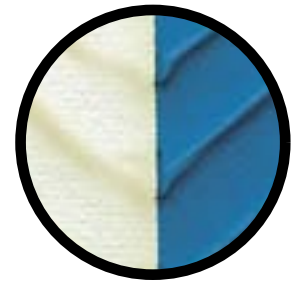
A super heavy gel that retains high peaks, brushstrokes and knife marks. Prolongs drying time and will dry to a translucent matte finish.

Product	Moq	Ref No	Barcode
Matte super heavy gel 237 ml	1	571966	0094376945799
Matte super heavy gel 946 ml	1	571967	0094376945812



Ultra Matte Gel

A medium with a high amount of resin. Maintains the opacity of the colour better than clear gel mediums. Add up to 50% and double the volume without changing the hue of the colour. This medium should be used together with opaque colours where transparency is not required. Dries to a super matte finish which can be very useful in photography.



Product	Moq	Ref No	Barcode
Ultra matte gel 237 ml	1	571968	0094376924091

Modeling Paste

A very thick, matte, opaque paste from marble dust and polymer emulsion. Used for building up heavy, sculptural structures on rigid supports.

This medium has a consistency like clay when wet but will dry to the hardness of stone. It can be mixed with acrylic paint or over painted when dry. Excellent also for oil colour, oil pastels, oilbars, watercolour and soft pastels. Fantastic for sculpturing. When the paste is dry it can be sanded or carved, the only limit is within the fantasy. We recommend usage on rigid supports.



Product	Moq	Ref No	Barcode
Modeling paste 946 ml	1	571923	0094376924138

Light Modeling Paste

A more lightweight mixture of marble dust and polymer emulsion that can be used whenever weight is a problem. The paste is white, matte and opaque when dry. Mix the paste with paint or use it on its own and paint over the structure when it is dry.



Product	Moq	Ref No	Barcode
Light modeling paste 237 ml	1	574787	0094376924442

Flexible Modeling Paste

A matte and opaque paste from marble dust and polymer emulsion. Dries slower than other modeling pastes, but is as hard as those, although this medium will be flexible when dry. With this paste it is possible to build up heavy structures and sculptural forms. We recommend usage on softer supports.



Product	Moq	Ref No	Barcode
Flexible modeling paste 237ml	1	571970	0094376945836
Flexible modeling paste 946ml	1	571971	0094376945850

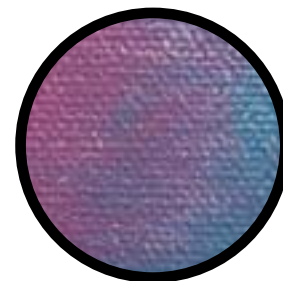


Liquitex Effect Mediums and Additives

Liquitex Effect Mediums and Additives have been developed with the intention of making it easier to use special techniques and achieve long lasting effects. This group comprises fluid mediums, gel mediums, texture mediums and additives.

Slow-dri® Fluid Retarder

A fluid medium that contains a retarder for extended drying time and easier blending. Reduces paint skinning-over on the palette. Enhances flow and makes detail brushwork easier. Mix with acrylic paint and mediums to extend drying time up to 50%. Do not mix more than 25% per volume into paint and mediums or paint may not fully dry. Very useful for watercolour techniques, fine detail brushwork, fabric painting and screen printing.



Product	Moq	Ref No	Barcode
Slow-dri fluid retarder 118 ml	1	571926	0094376926088

Flow-aid

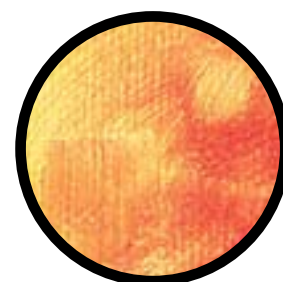
Breaks the surface tension of water and will therefore improve flow and absorption of any water-soluble paint, ink and dye. Makes blending and fine brushwork easier. Excellent for staining and achieving colour effects on unprepared canvases. This medium does not contain binder and should therefore be used in smaller amounts. Do not use undiluted. Dilute with water before mixing into paint. Distilled water is best, since quality of tap water varies. Normal dilution: 1 part of Flow-Aid to 20 parts of distilled water. Then mix Flow-Aid water into paint. Do not use Flow-Aid in marbling, this technique requires surface tension of the water.



Product	Moq	Ref No	Barcode
Flow aid 118 ml	1	550481	0094376924176

Slow-Dri® Gel Retarder

A liquid medium that will extend drying time with over 40%. A really necessary additive if you work in a dry climate. Mix directly into the paint on the palette to avoid skinning and wrinkles. Do not add more than 25% of this medium as it contains no binder and the paint film can otherwise be damaged.



Product	Moq	Ref No	Barcode
Slow-Dri® gel retarder 237 ml	1	571975	0094376945898

Liquithick Thickening Gel

Fantastic for sculptural effects when a matt finish is required. Make acrylic colour act like oil. Best used with opaque colours as this medium will not increase transparency. Liquithick Thickening Gel contains no binder. Therefore it is not recommended to add more than 25%, while otherwise stability can be at risk.



Product	Moq	Ref No	Barcode
Liquithick thicken. gel 237 ml	1	571976	0094376945904

Fabric Medium

Enhances the workability of acrylic paint on fabric when you wish to paint directly on fabric or unprepared canvas. Makes the paint run easier on the somewhat rough surface. Does not have to be fixated through ironing.



Product	Moq	Ref No	Barcode
Fabric medium 118 ml	1	571946	0094376926125

Iridescent Medium

Produces interesting and iridescent effects with acrylic colour. Dries transparent and does not oxidize. Even a small amount of medium makes the painting spark and shine. Try mixing with transparent colours for dramatic effects or use medium on its own on top of the dry colour.



Product	Moq	Ref No	Barcode
Iridescent medium 237 ml	1	571907	0094376924480

Airbrush Medium

A medium for thinning acrylic colour or gouache to achieve the right consistency for airbrushing. Mix with acrylic colour to achieve watercolour effects. Mix with other mediums to adjust consistency of colour. Even a much diluted acrylic colour will keep its flexibility, durability and adhesion. Mix with Soft Body for best results.



Product	Moq	Ref No	Barcode
Airbrush medium 237 ml	1	550476	0094376924336

Pouring Medium

Mix this medium with the Soft Body Artist Colors and pour it out. You will be able to create a smooth, seamless, strong body of paint with colours gliding into each other. You can even make a removable paint film. Or you can use Pouring Medium as a varnish for digital prints or paintings.

Product	Moq	Ref No	Barcode
Pouring medium 237 ml	1	571977	0094376945751
Pouring medium 946 ml	1	571978	0094376945768



String Gel

Mix the paint with String Gel and make string like applications and reliefs. String Gel has a consistency like honey and will increase transparency and flow when mixed with paint. Pour or drip the gel from above.

Product	Moq	Ref No	Barcode
String gel 237 ml	1	571979	0094376945874



Ceramic Stucco

Many artists' favourite medium. It has a heavy, fine consistency. Mix gel with paint, apply with a palette knife and achieve a finish like an Italian fresco. Ceramic Stucco on its own dries to a light grey, matte stucco finish. It is an excellent absorbing ground for glazes and washes. Try painting over the dry surface with Air Brush Medium or draw on the prepared support with pastel or charcoal.

Product	Moq	Ref No	Barcode
Ceramic stucco 237 ml	1	574782	0094376924367



White Opaque Flake

A coarse, heavy gel containing white flakes in different shapes and sizes. Can be used for creating foliage in landscape paintings if you mix the gel with opaque colours and paint on top of it when it's dry. Looks similar to snowflakes or shredded coconut.

Product	Moq	Ref No	Barcode
White opaque flake 237 ml	1	574789	0094376924510



Glass Beads

A medium containing clear round plastic beads which dries to a semi glossy and bubbly surface. Will look quite striking when mixed with transparent colours. This medium can be applied over unprepared supports and then covered with colour to achieve the desired effect. Can be used as a ground for both oil and acrylic paint.

Product	Moq	Ref No	Barcode
Glass beads 237 ml	1	574786	0094376924466



Blended Fiber

Excellent for adding structure and body to painted forms. This heavy, opaque gel gives, when dry, the effect of matt, flexible fibers. It retains knife marks and will give the illusion of peaks and valleys, and torn rags, when mixed with paint.

Product	Moq	Ref No	Barcode
Blended fiber 237 ml	1	574785	0094376924428



Resin Sand

A heavy, coarse gel that dries to semi gloss with a look of rough cement. Mix with Black Lava and Ceramic Stucco to create absorbent, granite like surfaces to paint on top of with Soft Body colours.

Product	Moq	Ref No	Barcode
Resin sand 237 ml	1	574784	0094376924404



Natural Sand

A finely textured gel that dries to a surface similar to glossy "beach sand". Mix with other gels to create an individual support. An excellent choice if you want to make a grainy ground. Try combing the gel with a paint comb to achieve a regular pattern.

Product	Moq	Ref No	Barcode
Natural sand 237 ml	1	574783	0094376924381



Black Lava

A clear gel speckled with tiny black particles, similar to raster dots. Mix with light transparent colours or interference colours to achieve beautiful speckled areas. This medium will cheer up whatever boring pieces of canvases! Try applying medium on top of dry acrylic paint for a change.

Product	Moq	Ref No	Barcode
Black lava 237 ml	1	574788	0094376924497



Liquitex Varnishes

A rule of thumb suggests it is always best to varnish an acrylic painting if this is possible. Varnish is applied over the dry painting out of many reasons. First of all varnish shall protect the painting from light exposure, dust, dirt, grease and scratches.

The pigments require protection against ultraviolet light. Varnish is also used to give the painting an even finish – glossy, satin or matte. You can mix varnishes with each other to achieve a special desired sheen.

High gloss varnish

Semi transparent when wet and clear when dry. Increases gloss, depths and intensity of the colours underneath. For hard supports. Not removable.



Product	Moq	Ref No	Barcode
High gloss varnish 118 ml	1	571938	0094376926071

Matt varnish

Produces a matte finish which will make dull and lifeless colours appear more intense. Does not drastically reduce colour depths as does Matte Medium. Thin, if desired, with a small amount of water. Suitable also for flexible supports. Not removable.



Product	Moq	Ref No	Barcode
Matt varnish 118 ml	1	571906	0094376929942
Matt varnish 473 ml	1	571919	0094376923902



Liquitex Free Style -large artists' brushes

Eight different types of big brushes for big creations. Free Style is a range comprising fantastic brushes in unique big sizes. Hairs are top of the line synthetic. Ferrule is rust resistant stainless steel. Satin matte finish handles are formed to fit. The hole in the handle means the brushes can be suspended. This is the range for large-scale paintings.



Universal Angle

A brush for all techniques. Perfect for applying gesso and covering large areas. Ideal for surfaces with corners and edges.

Product	Moq	Ref No	Barcode
Universal angle 2" - 5 cm	1	571980	0094376976328



Broad Flat Long Handle

A brush with a long handle – for sweeping strokes on large-scale work and useful for reaching high places. Good for covering large areas and applying varnish.

Product	Moq	Ref No	Barcode
Broad flat long handle 2"-5cm	1	571981	0094376976717



Paddle Brush

Easy to pocket and bring everywhere. Ideal for big strokes and perfect for slim lines drawn with the edge of the brush. An extremely handy brush.

Product	Moq	Ref No	Barcode
Paddle Brush 1" - 2,5 cm	1	571982	0094376976441
Paddle Brush 3" - 7,5 cm	1	571983	0094376976465



Broad Flat Short Handle

A gorgeous brush for painting large areas and (even) walls, for varnishing and sweeping brushstrokes.

Product	Moq	Ref No	Barcode
Broad flat short 4" - 10 cm	1	571984	0094376976380
Broad flat short 6" - 15 cm	1	571985	0094376976373



Splatter

Great for interesting splatter effects. Excellent to use with Soft Body and Acrylic Ink. Offered in round and flat to create different marks.

Product	Moq	Ref No	Barcode
Splatter, round	1	571986	0094376976762
Splatter, flat	1	571987	0094376976779



Liquitex Free Style - big painting and palette knives

Eight different types of big painting knives specially developed for creations on a large scale. With the finest stainless blades and ergonomically designed handles those knives are well suited for artists working with heavy body and super heavy body on big paintings. All knives have a hole in the handle and can be suspended.



1.



2.



11.

Spatuals

Product	Moq	Ref No	Barcode
Large knife 1	3*	571990	0094376974102
Large knife 2	3*	571991	0094376974119
Large knife 11	3*	571994	0094376974140



8.

Trowels

Product	Moq	Ref No	Barcode
Large knife 8	3*	571993	0094376974133



6.

12.

13.

14.

Scrapers

Product	Moq	Ref No	Barcode
Large knife 6	3*	571992	0094376974126
Large knife 12	3*	571995	0094376974157
Large knife 13	3*	571996	0094376974164
Large knife 14	3*	571997	0094376974171

Knives are shown in approximate scale 1:3